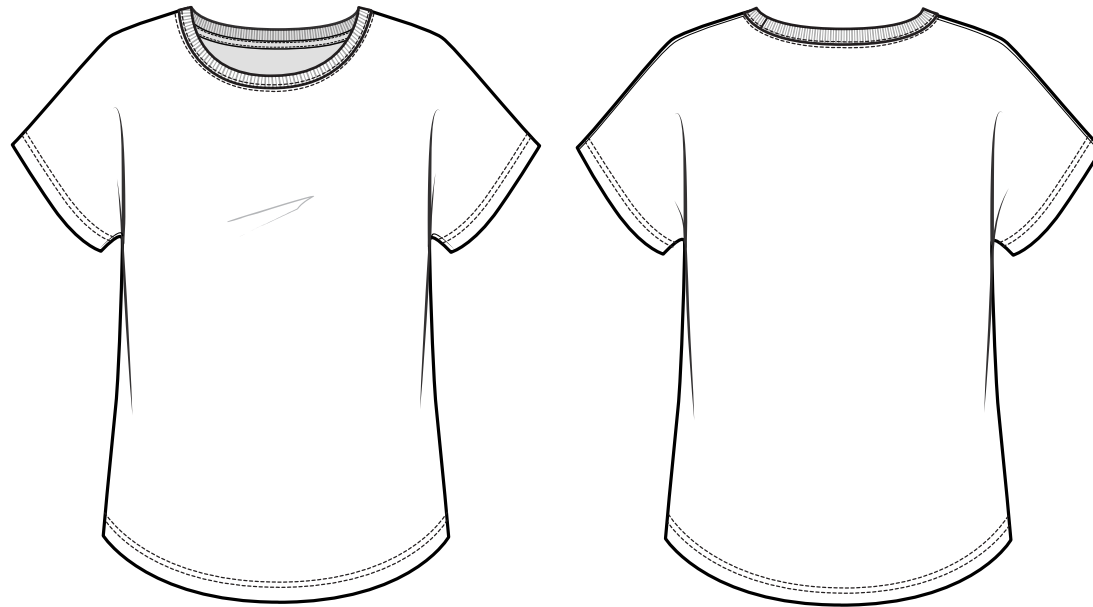


## MEASUREMENT SPECIFICATION



### STYLE # 1560 - WOMEN'S IDEAL DOLMAN T-SHIRT

60% COMBED RING-SPUN COTTON | 40% POLYESTER

30 SINGLES | 135 GSM | 4 OZ

| POINTS OF MEASUREMENT (INCHES) | XS     | S      | M      | L      | XL     | 2XL    | 3XL    |
|--------------------------------|--------|--------|--------|--------|--------|--------|--------|
| CHEST                          | 17 3/4 | 18 3/4 | 19 3/4 | 20 3/4 | 22 1/4 | 23 3/4 | 25 1/4 |
| BODY LENGTH FROM HPS           | 25 1/2 | 26     | 26 1/2 | 27     | 27 1/2 | 28     | 28 1/2 |

\*Disclaimer: The above sizing chart is subject to change. For more detailed information, please contact a Next Level Apparel Representative

\*All measurements are measured flat.