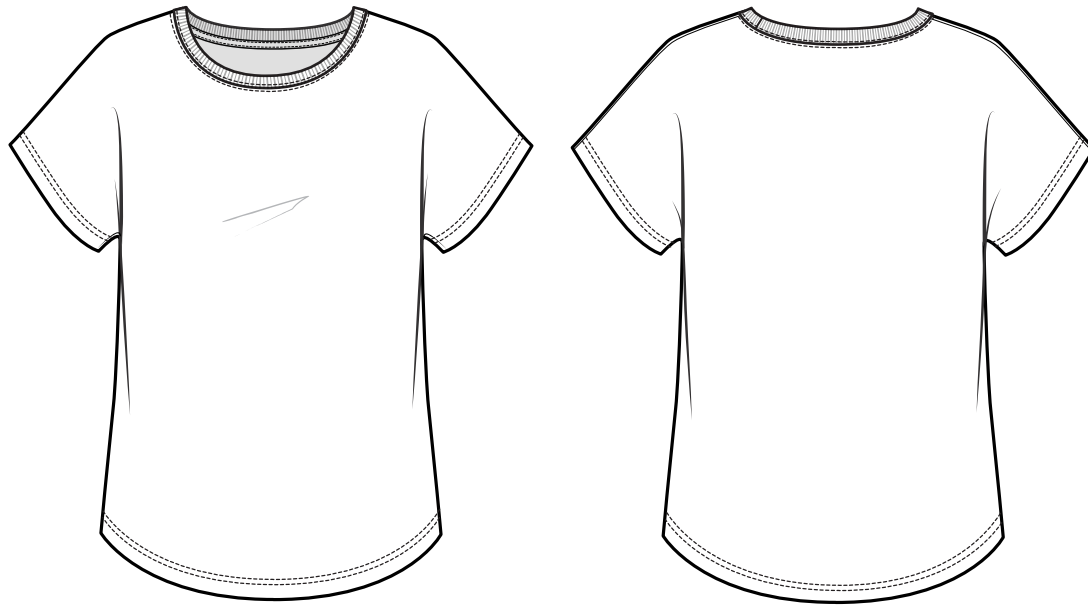


MEASUREMENT SPECIFICATION



STYLE # 6760 - WOMEN'S TRI-BLEND DOLMAN T-SHIRT

50% POLYESTER | 25% COMBED RING-SPUN COTTON | 25% RAYON

32 SINGLES | 145 GSM | 4.3 OZ

POINTS OF MEASUREMENT (INCHES)	XS	S	M	L	XL	2XL	3XL
CHEST	17 3/4	18 3/4	19 3/4	20 3/4	22 1/4	23 3/4	25 1/4
BODY LENGTH FROM HPS	25 1/2	26	26 1/2	27	27 1/2	28	28 1/2

*Disclaimer: The above sizing chart is subject to change. For more detailed information, please contact a Next Level Apparel Representative

*All measurements are measured flat.