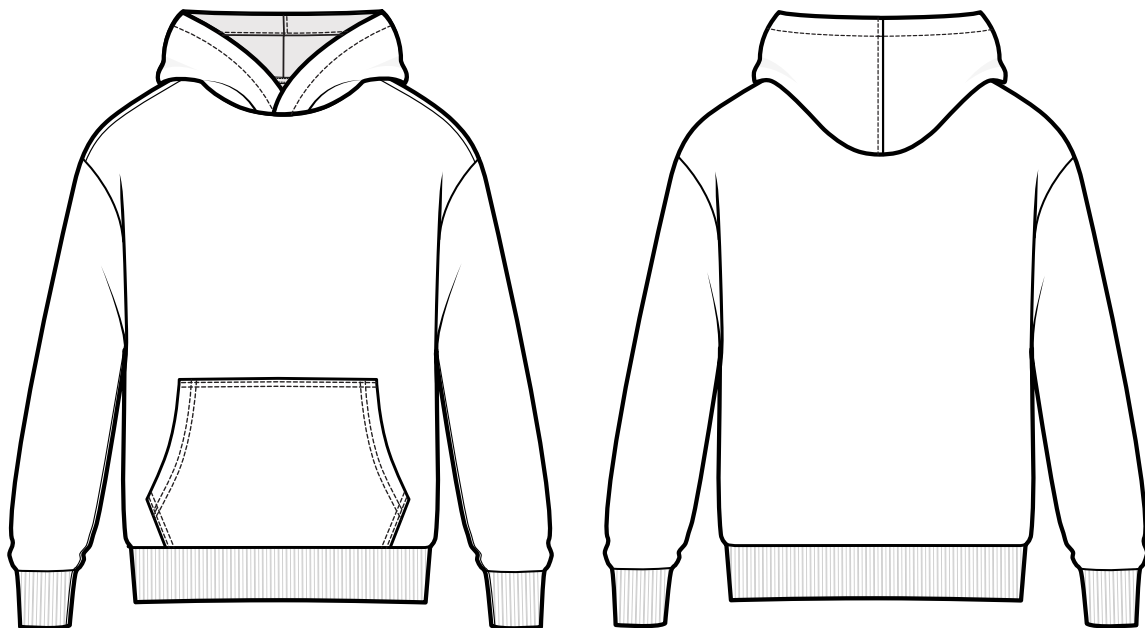


MEASUREMENT SPECIFICATION



STYLE # 9113 - YOUTH FLEECE PULLOVER HOODIE

80% COMBED RING-SPUN COTTON | 20% POLYESTER

[80|20 FLEECE] 100% COTTON FACE

30 SINGLES | 250 GSM | 7.4 OZ

HEATHER GRAY:

60% COMBED RING-SPUN COTTON | 40% POLYESTER

[MALIBU FLEECE]

30 SINGLES | 250 GSM | 7.4 OZ

POINTS OF MEASUREMENT (INCHES)	XS (4/5)	S (6/7)	M (8)	L (10/12)	XL (14/16)
CHEST	14	15 1/2	17	18 1/2	20
BODY LENGTH FROM HPS	19	20 1/2	22	23 1/2	25

*Disclaimer: The above sizing chart is subject to change. For more detailed information, please contact a Next Level Apparel Representative.

*All measurements are measured flat.